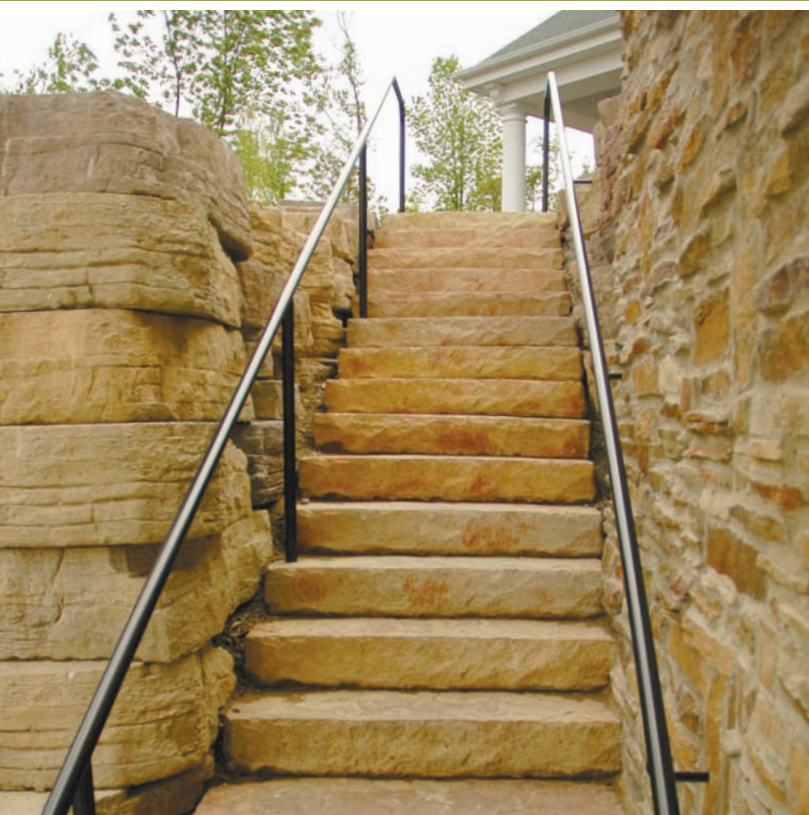


step
collection



ROSETTATM
WALLS • STEPS • ACCENTS

by  **Brown's**
CONCRETE PRODUCTS LIMITED



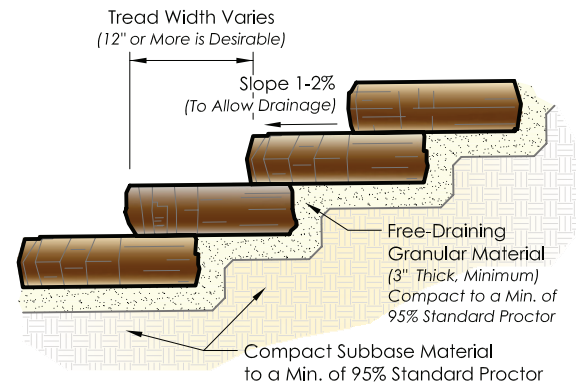
STEP COLLECTION

inviting, enhancing, enduring

www.brownsconcrete.com

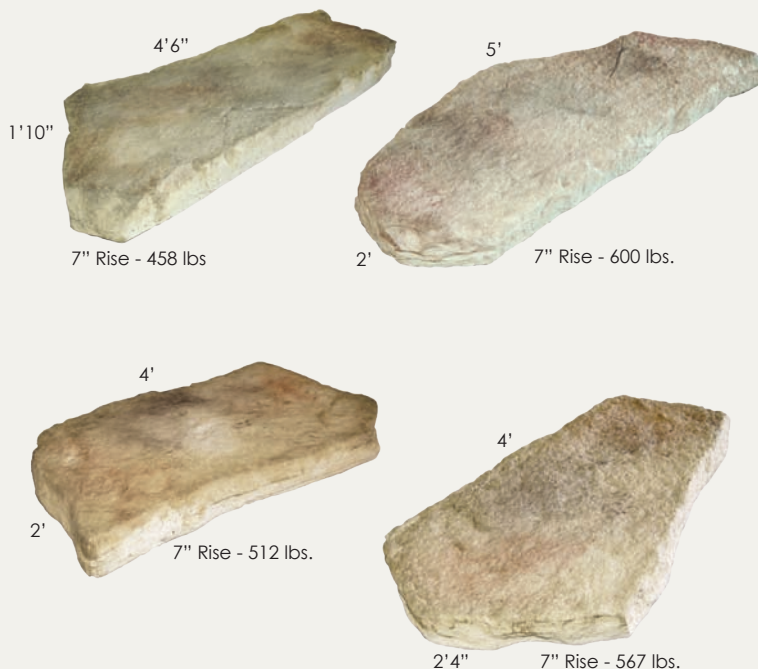
FEATURES

- **Highly natural** texture and shape.
- Consistent rise = **fast installation** and **safe** end result.
- Quality materials = **long term durability**.
- Multiple **natural color blends** available.
- Complimentary products = **creative possibilities**.



RANDOM STEPS

- Available in 7" rise
- Steps palletized with two 4'6" pieces, two 5' pieces and one each of the two 4' pieces.
- Total pallet weight 3195 lbs.
- Finished on all four sides and top



*All dimensions are nominal.

DIMENSIONAL STEPS

- All dimensional steps have 7" rise
- Steps palletized one size/pallet
- Finished on all four sides and top

- 48"x 18"x 7"
- 510 lbs/ea
- 6 ea/pallet



- 72"x 30"x 7"
- 1320 lbs/ea
- 3 ea/pallet

