

## BROWN'S SIGNATURE COLLECTION

PAVERS | RETAINING WALLS | CURBS | FIRE PITS

MADE STRONG WITH THE FINEST GRANITE AGGREGATE



# CONTENTS

Appian, Appian 50 .....	2
Aztec, Aztec 50 .....	4
Colonial .....	5
Athenian .....	6
Belgium .....	7
Venetian .....	8
Nordic .....	9
AquaPave® .....	10
Paver Installation .....	12
Dimensional Classic .....	13
Parkwall® .....	14
Wedgestone™ .....	16
Pisa® Light .....	17
Segmental Retaining Wall Installation .....	18
Signature Fire Pit Kits .....	20
Curbing .....	21
Colour Chart .....	22

## BROWN'S SIGNATURE COLLECTION

Brown's Concrete Products Limited offers a wide range of landscape design products and expertise that will help you create an amazing reflection of your own good taste. Our quality products meet and exceed industry manufacturing standards that will ensure impeccable results for your dream projects.

For any dealer, contractor or do-it-yourself installer, Brown's multitude of products, sizes, patterns and colors provide great opportunity to bring any hardscape idea to life. The key to our extraordinary and durable concrete products is our granite aggregates. Our unique and time tested process ensures a longer lasting, more durable product.



COLONIAL – BLACKWOOD





## A MESSAGE TO OUR CUSTOMERS

Brown's Concrete understands the importance of an outdoor living space. It is a sanctuary that is uniquely your own, establishing a positive first impression and adds value to your property.

For more than a century, Brown's has been adding value to concrete. As a family owned and operated business, we rely on the strength of each other, just as our concrete relies on the strength of granite to provide a superior product. From our concrete construction block, to our Signature Collection, we always strive to provide only the best quality product to our customers.

At Brown's, we are dedicated to developing new ideas, products and innovative solutions for your hardscape projects. Our team is always looking to the future of residential, commercial and institutional construction to find the next trend so that we may provide you with a unique, attractive and innovative solution.

As the trend towards green construction and environmentally friendly practices grows, so have our efforts to meet those trends. Our AquaPave by Brown's permeable paver system is a complete system that provides a proven solution for controlling rainfall and surface water run-off. With many systems in place for over a decade, the AquaPave system has proven to be a winner.

From all of us at Brown's Concrete, we look forward to another great season.





# APPIAN

BLACKWOOD

## COLOUR OPTIONS



BLACKWOOD



NIPISSING



DRIFTWOOD



TIMBERWOOD

Appian stone will give your hardscape project the look of classic cut stone walkways with gentle texture and smooth clean lines. Appian will appeal to any hardscape design.

# APPIAN 50

NEW FOR  
2018



## NEW, THINNER 50MM THICK PATIO STONE PAVER

Where a thin slab is desired, Appian 50 is the answer. With the same texture and durability of Appian 70mm, combine these two products for a seamless project or use on its own for patios, walkways and overlays. Appian 50 is the solution. For pedestrian use only.

## SHAPES AND SIZES



**APPIAN  
SMALL RECTANGLE**  
330mm x 165mm x 70mm  
(13" x 6.5" x 2.76")

**APPIAN 50  
SMALL RECTANGLE**  
330mm x 165mm x 50mm  
(13" x 6.5" x 1.97")



**APPIAN SQUARE**  
330mm x 330mm x 70mm  
(13" x 13" x 2.76")

**APPIAN 50  
SQUARE**  
330mm x 330mm x 50mm  
(13" x 13" x 1.97")



**APPIAN  
LARGE RECTANGLE**  
495mm x 330mm x 70mm  
(19.5" x 13" x 2.76")

**APPIAN 50  
LARGE RECTANGLE**  
495mm x 330mm x 50mm  
(19.5" x 13" x 1.97")

3 sizes of stone in each bundle. A soldier course bundle is available, made up of all Small Rectangle pavers.



# AZTEC

NEW FOR  
2018

## AZTEC & AZTEC 50

At 50 and 70mm thick, Aztec can be combined across walkways, patios and driveways. The 50mm Aztec 50 is perfect for overlays and pool decks. The Aztec 50 patio stone paver is for pedestrian use only.

Aztec is a smooth surface, tighter-jointed product combining the traditional modular look with smooth surface trends of tomorrow.

## SHAPES AND SIZES



**AZTEC 6.5X13**  
165mm x 330mm x 70mm  
(6.5" x 13" x 2.76")



**AZTEC 50 6.5X13**  
165mm x 330mm x 50mm  
(6.5" x 13" x 1.97")



**AZTEC 13X13**  
330mm x 330mm x 70mm  
(13" x 13" x 2.76")

**AZTEC 50 13X13**  
330mm x 330mm x 50mm  
(13" x 13" x 1.97")



**AZTEC 19.5X13**  
495mm x 330mm x 70mm  
(19.5" x 13" x 2.76")

**AZTEC 50 19.5X13**  
495mm x 330mm x 50mm  
(19.5" x 13" x 1.97")

TIMBERWOOD

## COLOUR OPTIONS



BLACKWOOD



NIPissing



DRIFTWOOD



TIMBERWOOD

# COLONIAL

Colonial is a paver with classic style and timeless elegance. With a smooth surface and gently textured sides, Colonial will add an element of richness and class to any project. With a variety of sizes, it is even easier to create the perfect work of art. From a simple walkway to a complex backyard hideaway, Colonial will add a touch of style and class to any outdoor project.

## SHAPES AND SIZES



**COLONIAL 6X6**  
150mm x 150mm x 60mm  
(6" x 6" x 2.36")

75mm x 150mm x 60mm  
(3" x 6" x 2.36")  
20 pieces per bundle



**COLONIAL 6X9**  
150mm x 225mm x 60mm  
(6" x 9" x 2.36")



**COLONIAL 9X9**  
225mm x 225mm x 60mm  
(9" x 9" x 2.36")



**BLACKWOOD**

## COLOUR OPTIONS



**SANDSTONE**



**BLACKWOOD**



# ATHENIAN

With the rolling stone texture of Athenian, this paver is ideal for driveways, walkways, patios or pool decks. Athenian Pavers may be used in driveways and in high traffic areas with relative ease. With a thickness of 70mm, these durable pavers are incredibly easy to maintain and will add great appeal to any property.

## SHAPES AND SIZES



409 mm x 163 mm x 70mm  
(16.10" x 6.42" x 2.76")



327 mm x 163 mm x 70mm  
(12.87" x 6.42" x 2.76")



245 mm x 163 mm x 70mm  
(9.65" x 6.42" x 2.76")



163 mm x 163 mm x 70mm  
(16.42" x 6.42" x 2.76")

4 sizes of stone in each bundle.



TIMBERWOOD

## COLOUR OPTIONS



BLACKWOOD



NIPISSING



# BELGIUM

## BELGIUM COBBLE

With Belgium Cobble versatility and possibilities are endless. With classic dimensions and appealing texture Belgium Cobble makes for a very relaxed and gentle look. With six different sized stones (available in five bundle configurations), one can use each size of stone independently, or mix two or more sizes together for almost limitless pattern combinations.

### SHAPES AND SIZES



**BELGIUM 12X12**  
300mm x 300mm x 60mm  
(12" x 12" x 2.36")



**BELGIUM 9X9**  
225mm x 225mm x 60mm  
(9" x 9" x 2.36")



**BELGIUM 6X12**  
150mm x 300mm x 60mm  
(6" x 12" x 2.36")



**BELGIUM 6X9**  
150mm x 225mm x 60mm  
(6" x 9" x 2.36")



**BELGIUM 6X6**  
150mm x 150mm x 60mm  
(6" x 6" x 2.36")

75mm x 150mm x 60mm  
(3" x 6" x 2.36")  
20 pieces per bundle

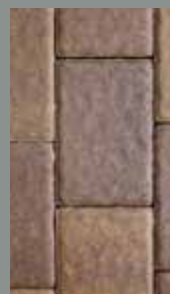


BLACKWOOD

### COLOUR OPTIONS



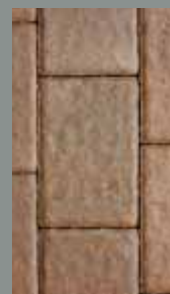
BLACKWOOD



LAURENTIAN



ROBINSON



TIMMINS



NIPISSING  
(6x9 only)



CHARCOAL  
(6x9 only)

# VENETIAN

## VENETIAN COBBLE

Reminiscent of the cobblestone streets of Old Europe, these quality pavers offer a multitude of design possibilities. Three different stone profiles; Venetian Random, Venetian Soldier and Venetian Square can each be used independently, or can be used together to create a variety of amazing looking paver patterns.

## SHAPES AND SIZES



**VENETIAN SQUARE**  
240mm x 240mm x 60mm  
(9.5" x 9.5" x 2.36")



**VENETIAN SOLDIER**  
240mm x 120mm x 60mm  
(9.5" x 4.8" x 2.36")



**VENETIAN CIRCLE**  
Add innovative design elements to your outdoor environment with full and half circles, fans and sweeping radiuses. They can be used with any paving stone system to create a customized look that's visually inspiring and impressive.

**VENETIAN RANDOM**  
3 sizes of stone in each bundle.



**LARGE RECTANGLE**  
180mm x 120mm x 60mm  
(7.1" x 4.8" x 2.36")



**SQUARE**  
120mm x 120mm  
x 60mm (4.8" x 4.8"  
x 2.36")



**SMALL RECTANGLE**  
60mm x 120mm  
x 60mm (2.4" x 4.8" x 2.36")



## COLOUR OPTIONS



BLACKWOOD



LAURENTIAN



# NORDIC

## NORDIC STONE

Although Nordic Stone is a one-size only paver, it is offered in a wide variety of colors. This timeless and simple brick-size paver has long been a favorite for many because it easily accommodates a wide-variety of patterns for both residential and commercial projects.



200mm x 100mm x 60mm  
(7.91" x 3.97" x 2.36")

Available in 80mm  
(special order)

## NORDIC SQUARE

A square version of our Nordic Stone paver, this unique 8" x 8" can be used on its own for a definitive grid pattern, or combined with the standard Nordic to create a variety of diverse laying patterns.



200mm x 200mm x 60mm  
(7.91" x 7.91" x 2.36")

BLACKWOOD

## COLOUR OPTIONS



BLACKWOOD



FAIRBANKS



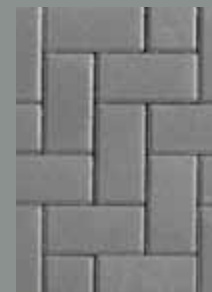
LAURENTIAN



ROBINSON



TIMMINS



CHARCOAL



RED

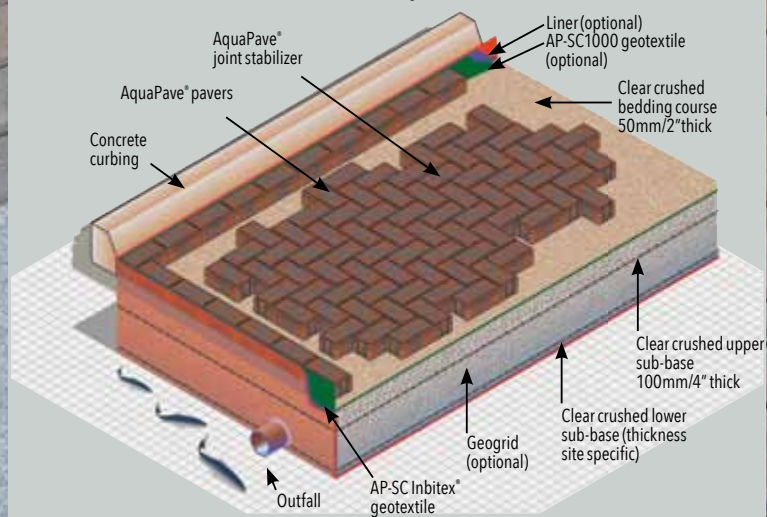


GRANITE



## Key Components of the AquaPave® Permeable On-Site Stormwater Source Control Systems

**AQUAPAVE®**





# AQUAPAVE®

## PERMEABLE ON-SITE STORMWATER SOURCE CONTROL SYSTEM

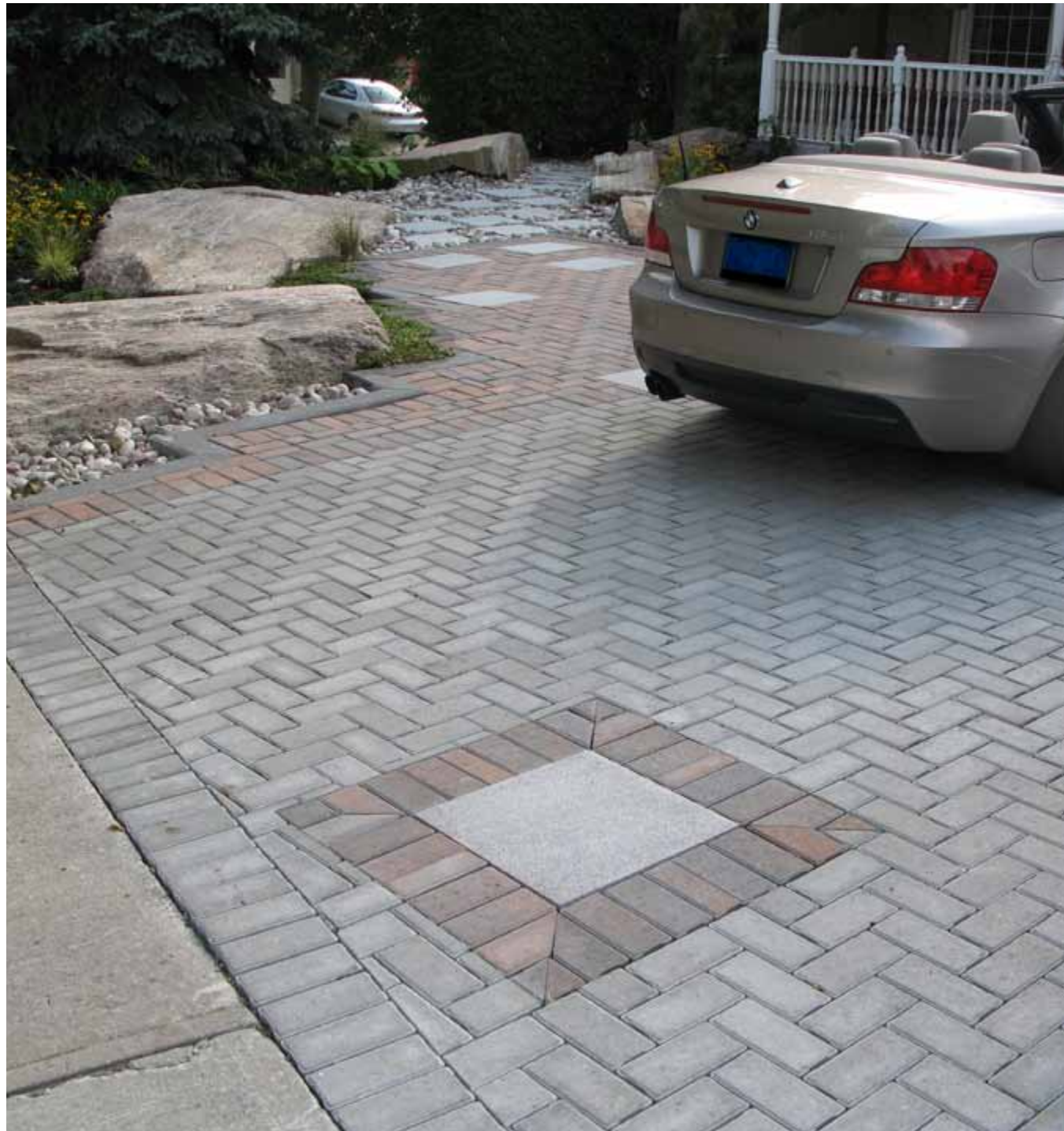
The AquaPave® system allows commonly recurring rainstorms to infiltrate through a permeable concrete paving stone surface into a clear crushed open graded aggregate base before infiltrating back into the ground or released into storm sewers. Known as permeable interlocking concrete pavement, the system acts as an infiltration facility for the storage, treatment and improvement of released water.

AquaPave® is the only permeable paver system on the market that directly incorporates a hydrocarbon treatment technology. The Inbitex® Geotextile system prevents oil and fuel that drips onto the parking and driving surfaces from contaminating the groundwater and area waterways. With thousands of applications worldwide, many of which have been in place for over a decade, the AquaPave® system has passed the test of time.

## SHAPES AND SIZES



**AQUAPAVE® NORDIC**  
200mm x 100mm x 80mm  
(7.91" x 3.97" x 3.15")



# PAVER INSTALLATION

## 1. PLANNING

Outline the proposed area of construction with a garden hose and then park vehicles (for driveways) / place furniture (for patios) in the area to ensure that the final product is adequately sized. Once everything looks fine, transfer the information onto paper.

## 2. EXCAVATION & BASE PREPARATION



The depth of the excavation will depend upon the project and soil conditions; for example, a driveway excavation is normally 400-600mm (16-24") deep, while a walkway or patio excavation is normally 200-250mm (8-10").

To provide a secure base in which to install the edge restraint, the area of the excavation needs to be larger than the area being paved; the rule of thumb is to extend the excavation outwards in all directions equal to the total depth of the excavation.

Prior to starting the work, place stakes at each end of the job and run string lines between them to represent the desired final grade; ensure a minimum slope of 1mm per 100mm (1/8" per 12") for proper drainage away from your home. While excavating, use a measuring tape to verify depths off of the string lines. When the excavating is completed, remove any debris and then compact the native material with at a minimum a 7,000 lbf tamper. Spread the backfill material in loose layers of no greater than 150mm (6"), wet the soil with water (helps increase

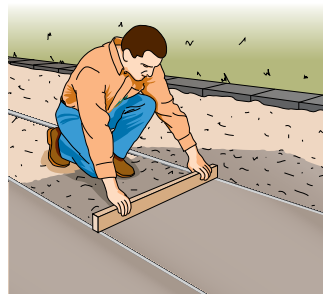
compaction) and compact into place. Continue this process until within 85mm (3 1/3") of final proposed grade. Run a 3m long straight edge over the completed area to detect any high/low spots.

## 3. EDGE RESTRAINTS

Lay a row of pavers from one side of the area to the other and then position your curbs accordingly to avoid unnecessary cuts. For concrete curbs, dig a trench to the required depth (subject to final placement level of curb), place the curbs and then backfill to original base grade. For plastic curbing, the sections are positioned directly on top of the base and then staked into place using 250mm (10") spikes.

## 4. BEDDING SAND

The key is to ensure a consistent thickness for the loose sand. The easiest way to do this is to use 25mm (1") diameter Schedule 80 PVC pipe for guide rails (the outside diameter is 35mm). Spread the sand loosely between a pair of pipes, then pull a straightedge along the top to level the sand out (see illustration). Avoid disturbing the sand once in place.



## 5. LAYING THE PAVERS

The laying pattern used is subject to personal preference; however, herringbone patterns are recommended for traffic areas. Place chalk lines on sand at 2m (6') intervals to provide straight line guides during installation. Always start laying at the lowest point so that stones cannot separate; place hand tight. Use a rubber mallet as required to adjust stones.

While laying, mix pavers from at least 4 different cubes at a time so that any colour variations between cubes are blended in.

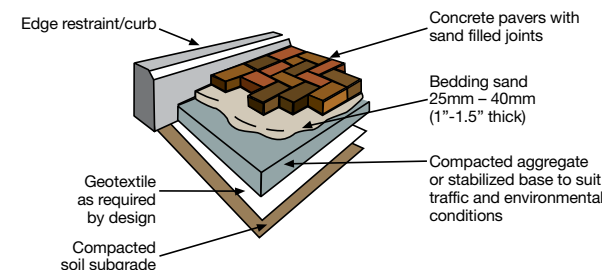


Cut pavers to fill gaps along edges and around obstacles as required using cantilever splitters or masonry saws. For curves, place pavers beyond the final edge, mark off the desired curve, and then using a masonry saw cut the pavers in place. Ensure that area is washed down after cutting as the residue can create stains.

## 6. COMPACTION & FINISHING

After all pavers are in position (or at the end of each day), sweep off the surface completely and then compact the pavers into the bedding sand using a 5000 lbf plate tamper. Spread dry jointing sand and sweep into joints until full. Clean off surface and vibrate jointing sand into spaces using tamper. Repeat until joints are completely full.

## INTERLOCKING PAVER SYSTEM INSTALLATION PROFILE





# SIGNATURE RETAINING WALLS

## DIMENSIONAL CLASSIC

This versatile rustic stone block is ideal for planter walls, light stands, barbeque enclosures, outdoor bars, driveway entrance pillars and edge restraints.

### SHAPES AND SIZES



**DIMENSIONAL CLASSIC**  
270mm long x 180mm deep x 90mm high  
(10.63" long x 7.09" deep x 3.54" high)



**BLACKWOOD**

### COLOUR OPTIONS



**BLACKWOOD**



**LAURENTIAN**



**ROBINSON**



**TIMMINS**



**TIMBERWOOD**





PARKWALL®

GRANITE



Brown's favourite Signature series retaining wall product, the reliable and economical Parkwall® Retaining Wall system is aesthetically pleasing and easy to construct. Compatible to work in both curved and straight configurations, Parkwall has the flexibility to match almost any design.

For walls up to 3.4m (11.1') in height when geogrid is used.

## SHAPES AND SIZES

Each shape bundled separately.



**PARKWALL® STRAIGHT**  
150mm high x 200mm wide x 295mm deep (5.9" high x 7.87" wide x 11.61" deep)



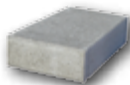
**PARKWALL® TAPER**  
150mm high x 200mm (tapers to 175mm) wide x 295mm deep (5.9" high x 7.87" (tapers to 6.89") wide x 11.61" deep)



**PARKWALL® CORNER**  
150mm high x 193mm wide x 295mm deep (5.9" high x 7.59" wide x 11.61" deep). Available as left or right corner



**PARKWALL® 12" CAP**  
75mm high x 600mm wide x 300mm deep (2.95" high x 23.6" wide x 11.81" deep)



**PARKWALL® WEDGE CAP**  
75mm high x 200mm (tapers to 175mm) wide x 325mm deep (2.95" high x 7.87" (tapers to 6.89") wide x 12.79" deep)



**PARKWALL® PILLAR CAPSTONE**  
75mm high x 610mm wide x 610mm deep (2.95" high x 24" wide x 24" deep)



ROBINSON

## COLOUR OPTIONS



BLACKWOOD



LAURENTIAN



ROBINSON



TIMBERWOOD



GRANITE



# WEDGESTONE™

This is a true combination of versatility and easy installation. Brown's Wedgestone is made with a quarried face both front and back making it ideal for circular, curved and straight garden walls, fire-pits, steps, flower beds or tree-rings.

## SHAPES AND SIZES



**COPING UNIT**  
200mm deep x 225mm (tapered to 150mm) wide x 100mm high  
(7.87" deep x 8.9" (tapered to 5.9") wide x 3.93" high)

LAURENTIAN

## COLOUR OPTIONS



BLACKWOOD



LAURENTIAN



ROBINSON



TIMMINS



TIMBERWOOD



GRANITE



SANDSTONE



# PISA® LIGHT

Brown's Pisa® Light is a great option for many great landscape and garden ideas. Easy to install and maintain, the Pisa® Light wall system includes straight units, taper units, corners, caps and possible lighting systems. Attractive curved walls, straight walls, steps and patio areas are made with ease and beauty using the Pisa® Light system.

## SHAPES AND SIZES

### PISA® LIGHT STRAIGHT

150mm high x 200mm wide x 216mm deep  
(5.9" high x 7.87" wide x 8.5" deep)



### PISA® LIGHT CORNER

150mm high x 200mm wide x 290mm deep  
(5.9" high x 7.87" wide x 11.4" deep)

Available as left or right corner



### PISA® LIGHT 9" CAP

75mm high x 600mm wide x 225mm deep (2.95" high x 23.6" wide x 8.85" deep)



TIMMINS

# SEGMENTAL RETAINING WALL INSTALLATION

## 1. PLANNING

The height and purpose of the wall, as well as existing soil types, groundwater conditions, and surrounding land uses, all play a part in the design of a retaining wall. That is why we recommend that you consult with your local supplier to verify which wall system will work for your given project. Remember to incorporate a drainage system into your design so that water does not become trapped behind your wall.

## 2. EXCAVATION & BASE PREPARATION

Mark off the front and back of the wall, and then the front and back of the excavation; the offset at the front of the wall is typically 100-150mm (4-6"), while the offset at the back of the wall is 150mm (6") for low walls (<27") and 300mm (12") for higher walls. Where the excavation is cutting into a slope, grade the back of the excavation at the angle at which the native soil can be safely left without collapsing.

To prevent the wall from sliding forward, it is common practice to bury at a minimum 1 full course of wall stones. The depth of the excavation also needs to allow for a 150mm (6") thick layer of base material.

Once the excavation is completed, remove any debris and then thoroughly compact the native soil. Spread the backfill material in loose layers of no greater than 75mm (3"), wet the soil with water (helps increase compaction) and compact into place. Leave a v-notch at the back of the excavation for the drain pipe. Set string level to verify final grade. En-

sure base is level front to back and side to side as this will minimize the leveling of individual blocks and will ensure straight lines and smooth arcs.

Lay the geotextile starting just under the back of the wall and up the back slope of the trench. Remember to leave adequate material at the top of the slope for the fold back, and to overlap the separate pieces a minimum of 150 mm (6"). Use sand bags or similar to keep the geotextile in place as required.

Place the drain pipe in the v-notch at the back of the foundation, and surround with drain rock.

## 3. LAYING THE BASE COURSE

Select the starting point for the wall. If the base of the wall is stepped up, start at the lowest point and work up; remember to adjust for the natural batter in the wall between steps. If there is an outside corner, start with the corner unit (to potentially avoid having to cut stones later on to fit).

Set a string level to mark the back of the first course. Use a level to ensure blocks are level front to back and side to side.

## 4. REMAINING COURSES

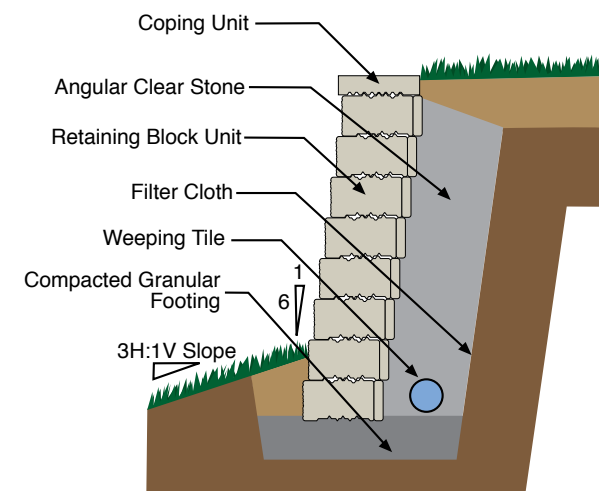
Sweep the top of each course prior to proceeding. Place next course of units in a running bond pattern so that the middle of the unit is approximately above the joint between the underlying blocks. NEVER ALIGN BLOCKS VERTICALLY. After laying a course, backfill and compact behind wall to the same elevation as the top of the just placed units.

## 5. COPING & GRADING

Where coping is required, sweep the top of the underlying course prior to proceeding. Place a line of butyl tape or Bond Loc adhesive on both sides of the groove. Place the coping unit on top and apply some pressure to secure.

Prior to backfilling behind the coping and last wall unit, pull filter cloth towards back of wall and tuck in place. Fill to final grade to suit desired conditions; ensure final slopes allow for proper drainage away from the wall.

## RETAINING WALL CROSS SECTION









## SIGNATURE FIRE PIT KITS



## KENT FIRE PIT KIT

The Kent Fire Pit Kit is a larger unit with grand proportions. This square fire pit kit comes complete with the stone and steel insert. The refined dimensional look of this unit is well-suited to that yard with modern, clean-cut lines where angles and depth are important.



## OXFORD FIRE PIT KIT

The Oxford Fire Pit Kit is a great fire pit for a smaller space. With its smaller design and low profile it is perfect for a small yard or patio. The gentle features of a round fire pit allow it to blend in with a wide variety of architectural styles.



## COLOUR OPTIONS



BLACKWOOD



LAURENTIAN



ROBINSON



TIMMINS



TIMBERWOOD



SANDSTONE



GRANITE



# CURBING

Brown's Concrete makes an assortment of distinct and functional curbs for unique landscape needs. Whether it's our bullnose curb, three-foot curb or meter curb, all of our curbing can provide your project with structural support and pronounced edging for your driveway or patio areas.

## SHAPES AND SIZES



**BULLNOSE CURB**  
115mm wide x 570mm long x  
90mm high (4.5" wide x 22.5"  
long x 3.5" high)



**3 FT. CURB**  
80mm wide x 900mm long  
x 150mm high (3.25" wide x  
35.5" long x 6" high)



**METRE CURB**  
150mm wide x 1000mm long  
x 150mm high (6" wide x 39"  
long x 6" high)







Brown's Concrete Products Limited  
3075 Herold Drive,  
Sudbury, Ontario, Canada P3E 6K9

Telephone: 705-522-8220  
Fax: 705-522-2732  
Toll-free: 1-800-461-4888  
Email: info@brownsconcrete.com

www.BrownsConcrete.com



MADE IN ONTARIO  
SINCE 1907



Canadian  
Home Builders'  
Association



Canadian Concrete Masonry  
Producers Association



icpi  
Interlocking Concrete  
Pavement Institute®



NATIONAL  
CONCRETE MASONRY  
ASSOCIATION



Landscape Ontario  
HORTICULTURAL TRADES ASSOCIATION

## DRY CAST COLOURS

	APPIAN	APPIAN SOLDIER	AZTEC	COLONIAL	ATHENIAN	BELGIUM	VENETIAN	NORDIC	CLASSIC DIMENSIONAL	PARKWALL	WEDGESTONE	PISA LIGHT	OXFORD FIRE PIT	KENT FIRE PIT	AQUAPAVE
NIPISSING RANGE						6"x9"									
BLACKWOOD RANGE															
DRIFTWOOD RANGE															
TIMBERWOOD RANGE															
ROBINSON RANGE															
TIMMINS RANGE															
LAURENTIAN RANGE															
FAIRBANKS RANGE															
SANDSTONE RANGE															
RED															
CHARCOAL						6"x9"									
GRANITE															

SPECIAL ORDER (ANY COLOUR)

## BROWN'S LIFETIME WARRANTY

Note: Colour swatches are for reference only and may not represent the actual product colour. We recommend that you see your local dealer to view actual sample pieces prior to final colour selection.

Brown's Concrete Products Limited provides a Lifetime Warranty to the original purchaser on the structural integrity of its products used in residential applications. If the material installed on the owner's property, using our recommended guidelines, proves to be defective the product will be replaced without cost. Colour matching and the occurrence of efflorescence cannot be guaranteed. The Warranty does

not cover damage resulting from subgrade settlement or movement, contact with chemicals or paint, discolouration due to airborne contamination, staining, oxidation or improper sealing. Please refer to I.C.P.I. recommendations for de-icing products that will minimize potential degradation of concrete. This warranty is not transferable and proof of purchase is required.