

Brown's

Living life beautifully.

Hardscape Collection

- Pavers
- Slabs
- Retaining Walls
- Curbs
- Fire Pits
- Steps



Hardscape Collection

VOLUME 117

CONTENTS

Product Application Legend	1
Outcropping	2
Grand Ledge	4
Rockton	6
Northface	7
Belvedere	8
Dimensional Wall	9
Parkwall	10
Wedgestone	11
Antico Stacker	12
Garden Lock	13
Random Steps	14
Dimensional Steps & Step Fillers	15
Amberley	16
Appian 70 & Appian 50	18
Appian XL	19
Aztec 70 & Aztec 50	20
Athenian	21
Nordic	22
Venetian	23
Belgium	24
Superior Steppers	25
DC 80	26
Kent II & Oxford Fire Pit Kits	27
Rockton, Belvedere & Dimensional Fire Pit Kits	28
Stone Edge Curbs	30
Curbs	31
Inspiration	32
Colour charts	35



Signature
by Browns

ROSETTA™
by Browns

NORTHFACE
by Browns



Brown's Concrete Products – here for our customers and our community.

Brown's Concrete has a long and rich history in the concrete industry. Through innovation, service and a down-to-earth vision, Brown's has always maintained that it's the vision of our customer that creates our mission. It's something we take seriously and will always strive to satisfy. Your project is our project.

With the participation of everyone in the Brown's organization, a simple philosophy has become a daily routine. Brown's will work with our clients in a positive and professional manner, build quality into every product that we sell, and remain personally invested in the satisfaction of our customers. With quality products, quality people and our determination to always deliver on these ideals, Brown's will offer premium value to you as a customer.

As a trusted manufacturer, Brown's has partnered with many like-minded businesses throughout the province to distribute quality Brown's products right in your region. Our extensive network of Dealers brings a passion in their businesses that equals the Brown's passion for manufacturing.

As you plan your project, rest easy knowing that the team at Brown's is dedicated, committed and passionate to bring you the best value for every dollar that you invest in your project.

With Brown's Concrete as your trusted supplier, you can ensure that you're getting quality materials at a price that fits your budget. Since 1907 we have been providing superior products and expertise.



PRODUCT APPLICATION LEGEND



SUITABLE FOR DRIVEWAYS



SUITABLE FOR PEDESTRIANS



SUITABLE FOR COMPACTOR USE



SUITABLE FOR ROADWAYS



SUITABLE FOR WALLS



SUITABLE FOR STAIRS



SUITABLE FOR COMPACTOR USE WITH RUBBER PAD



SUITABLE FOR PATIO AND PORCH OVERLAYS



PERMEABLE PAVER

OUTCROPPING

SHAPES & SIZES

PALLET 'A'



3'6" W X 12" H
106.7cm wide x 30.5cm high



4' W X 12" H
121.9cm wide x 30.5cm high



5' W X 12" H
152.4cm wide x 30.5cm high



5' 6" W X 12" H
167.6cm wide x 30.5cm high

PALLET 'B'



2' W X 6" H
60.9cm wide x 15.2cm high



4' W X 6" H
121.9cm wide x 15.2cm high



3' W X 6" H
91.4cm wide x 15.2cm high



4' 6" W X 12" H
137.2cm wide x 30.5cm high



3' W X 12" H
91.4cm wide x 30.5cm high



6' W X 12" H
182.9cm wide x 30.5cm high

COLOURS



MANITOU



WINDSOR

ALL PALLETS ARE SOLD IN FULL Pallet QUANTITIES ONLY.



See Resource Guide for additional sizes and options.







GRAND LEDGE

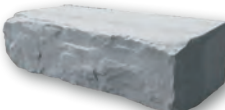
SHAPES & SIZES



72" W x 12" H x 23" D
1829mm x 305mm x 584mm



60" W x 12" H x 23" D
1524mm x 305mm x 584mm



48" W x 12" H x 23" D
1219mm x 305mm x 584mm



36" W x 12" H x 23" D
914mm x 305mm x 584mm



COPING
54" W x 12" H x 20" D
1372mm x 305mm x 508mm

Grand Ledge, Grand Ledge Coping and Grand Ledge Corners are sold in separate full bundles only.





CORNERS

- 50.5" W x 12" H x 24" D**
1282mm x 305mm x 508mm
- 35" W x 12" H x 24" D**
895mm x 305mm x 457mm
- 46" W x 12" H x 21" D**
1168mm x 305 x 533mm
- 43" W x 12" H x 21" D**
1086mm x 305mm x 483mm

Dimensions are nominal due to the surface texture.

COLOURS



FOND DU LAC



MANITOU



ROCKTON

SHAPES & SIZES



42" W x 6" H x 10.5" D
1067mm x 152mm x 267mm



30" W x 6" H x 10.5" D
762mm x 152mm x 267mm



21" W x 6" H x 10.5" D
533mm x 152mm x 267mm



12" W x 6" H x 10.5" D
305mm x 152mm x 267mm



CORNER
21" W x 6" H x 10.5" D
533mm x 152mm x 267mm

Corners are bundled separately.

COLOURS



FOND DU LAC



MANITOU





NORTHFACE

SHAPES & SIZES



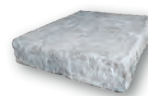
17.75" H x 72" W x 24" D
450mm x 1829mm x 610mm



17.75" H x 36" W x 24" D
450mm x 914mm x 610mm

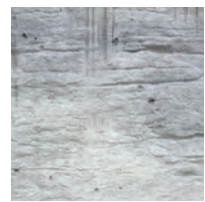


6' COPING
7" H x 72" W x 30" D
178mm x 1829mm x 762mm



3' COPING
7" H x 36" W x 30" D
178mm x 914mm x 762mm

COLOURS



MANITOU





BELVEDERE®

SHAPES & SIZES



64 textures and sizes.
 6" to 18" L x 3" to 6" H
 152mm to 457mm x 76mm x 152mm

CORNER & COPING
 Corners and Coping are bundled separately.

COLOURS



MANITOU



WINDSOR





DIMENSIONAL WALL

SHAPES & SIZES



STRAIGHT
8" D x 12" W x 4" H
203mm x 304mm x 101mm

COLOURS

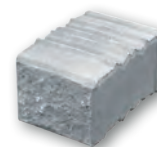


MANITOU





SHAPES & SIZES



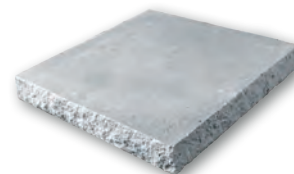
STRAIGHT
5.9" H x 7.87" W x 11.61" D
150mm x 200mm x 295mm



CORNER
5.9" H x 7.59" W x 11.61" D
150mm x 193mm x 295mm
(left and right corner as a pair)



COPING
2.95" H x 23.6" W x 11.81" D
75mm x 600mm x 300mm



COLUMN CAP
2.95" H x 24" W x 24" D
75mm x 600mm x 600mm
Also available in Charcoal, Ultra Black and Sahara Blend colours

PARKWALL®

COLOURS



BLACKWOOD



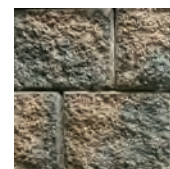
DRIFTWOOD



GRAY



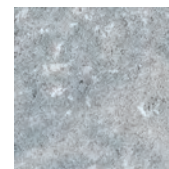
NIPISSING



TIMBERWOOD



BEIGE MIX



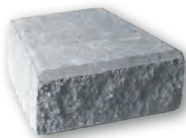
GREY MIX





WEDGESTONE

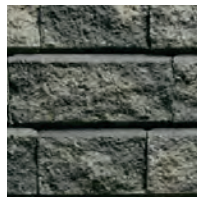
SHAPES & SIZES



7.87" D x 8.9" W (tapered to 5.9")
x 3.93" H

200mm deep x 225mm (tapered to
150mm) wide x 100mm high

COLOURS



BLACKWOOD



TIMBERWOOD



NIPISSING



DRIFTWOOD



GRANITE





ANTICO STACKER

SHAPES & SIZES



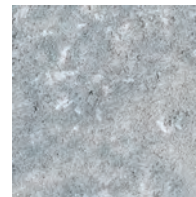
11.81" W x 3.92"H x 7.87"D
300mm x 100mm x 200mm



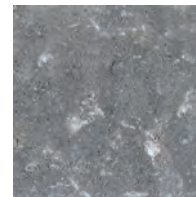
COLOURS



BEIGE MIX



GREY MIX

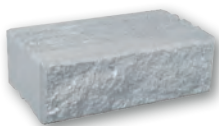


ULTRA BLACK
(Special Order)



GARDEN LOCK™

SHAPES & SIZES



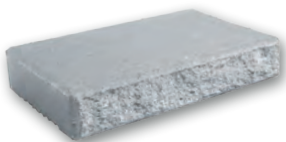
Large Unit
14.96"W x 4.92"H x 8.85"D
380mm x 125mm x 225mm
Units: 25



Medium Unit
9.84"W x 4.92"H x 8.85"D
250mm x 125mm x 225mm
Units: 25



Small Unit
7.48"W x 4.92"H x 8.85"D
190mm x 125mm x 225mm
Units: 25



STRAIGHT COPING
15.74"W x 2.95"H x 10.23"D
400mm x 75mm x 260mm



CORNER
13.46"W x 4.92"H x 8.85"D
342mm x 125mm x 225mm



WEDGE BLOCK
8.07(5.31)"W x 4.92"H x 8.85"D
205(135)mm x 125mm x 225mm

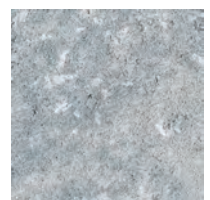


WEDGE COPING
8.23(5.17)"W x 2.95"H x 10.23"D
209(131)mm x 75mm x 260mm

COLOURS



BEIGE MIX



GREY MIX





RANDOM STEPS

SHAPES & SIZES



6-FOOT STEP
72" W x 7" H
1829mm x 178mm



4-FOOT STEP
48" W x 7" H
1219mm x 178mm

COLOURS



MANITOU



WINDSOR

Please refer to the Resource Guide for more sizes and shapes available for the 4 foot and 6 foot Random steps.





DIMENSIONAL STEPS AND STEP FILLERS

SHAPES & SIZES



6-FOOT STEP
72" W x 7" H x 30" D
1829mm x 178mm x 762mm

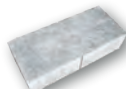


4-FOOT STEP
48" W x 7" H x 18" D
1219mm x 178mm x 450mm



3-FOOT STEP
36" W x 7" H x 30" D
914mm x 178mm x 762mm

Available only in Manitou.



16" FILLER
16" W x 7" H x 4" D
406mm x 178mm x 102mm



12" FILLER
12" W x 7" H x 4" D
305mm x 178mm x 102mm

See Resource Guide for more information.

COLOURS



MANITOU



WINDSOR



FOND DU LAC (Available in limited quantities)



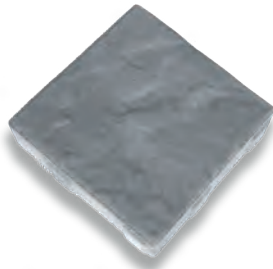


AMBERLEY

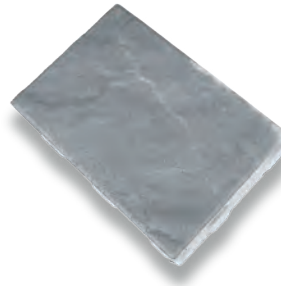
SHAPES & SIZES



4.5" x 9" x 2.36"
114mm x 225mm x 60mm



9" X 9" x 2.36"
225mm x 225mm x 60mm



9" X 13.5" x 2.36"
225mm x 343mm x 60mm

All three sizes are sold in one bundle configuration.



COLOURS



NIPISSING



BLACKWOOD



TIMBERWOOD



DRIFTWOOD





SHAPES & SIZES



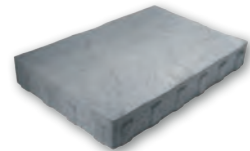
APPIAN 70 (2.76"/70mm depth)
13" x 6.5" 330mm x 165mm

APPIAN 50 (1.97"/50mm depth)
13" x 6.5" 330mm x 165mm



APPIAN 70 (2.76"/70mm depth)
13" x 13" 330mm x 330mm

APPIAN 50 (1.97"/50mm depth)
13" x 13" 330mm x 330mm



APPIAN 70 (2.76"/70mm depth)
19.5" x 6.5" 495mm x 165mm

APPIAN 50 (1.97"/50mm depth)
19.5" x 6.5" 495mm x 165mm

All three sizes are sold in one bundle configuration.



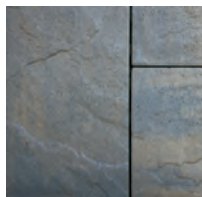
APPIAN 70 & 50 SOLDIER
(2.76"/70mm depth)
13" x 6.5" 330mm x 165mm

APPIAN 70 & APPIAN 50

COLOURS



BLACKWOOD



NIPISSING

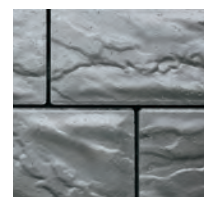


DRIFTWOOD



TIMBERWOOD

COLOUR



MIDNIGHT CHARCOAL

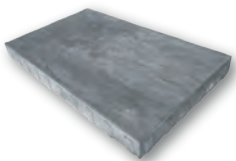
Midnight Charcoal is available only in Ap pian 70mm & Ap pian 50mm Soldier.





APPIAN XL

SHAPES & SIZES

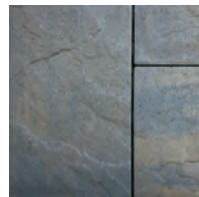


APPIAN XL
19.5" x 32.5" x 2.76"
495mm x 825.5mm x 70mm

COLOURS



BLACKWOOD



NIPISSING





SHAPES & SIZES



AZTEC 70 (2.76"/70mm depth)
13" x 6.5" 330mm x 165mm

AZTEC 50 (1.97"/50mm depth)
13" x 6.5" 330mm x 165mm



AZTEC 70 (2.76"/70mm depth)
13" x 13" 330mm x 330mm

AZTEC 50 (1.97"/50mm depth)
13" x 13" 330mm x 330mm



AZTEC 70 (2.76"/70mm depth)
19.5" x 13" 495mm x 330mm

AZTEC 50 (1.97"/50mm depth)
19.5" x 13" 495mm x 330mm

All three sizes are sold in one bundle configuration.



AZTEC 70 & 50 SOLDIER
13" x 6.5" 330mm x 165mm

AZTEC 70 & AZTEC 50

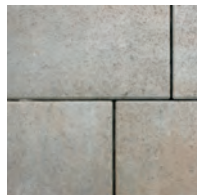
COLOURS



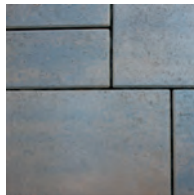
BLACKWOOD



NIPISSING

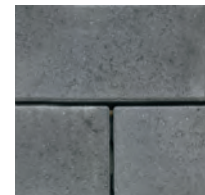


DRIFTWOOD



TIMBERWOOD

COLOUR



MIDNIGHT CHARCOAL

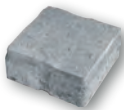
Midnight Charcoal is available only in Aztec 70mm & Aztec 50mm Soldier.



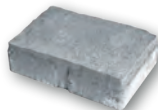


ATHENIAN 70 - SPECIAL ORDER ONLY

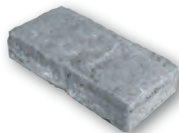
SHAPES & SIZES



6.42" x 6.42" x 2.76"
163mm x 163mm
x 70mm



9.65" x 6.42" x 2.76"
245mm x 163mm
x 70mm



12.87" x 6.42" x 2.76"
327mm x 163mm
x 70mm



16.10" x 6.42" x 2.76"
409mm x 163mm
x 70mm

COLOURS



BLACKWOOD



NIPISSING



MADE STRONG WITH THE FINEST GRANITE AGGREGATE



NORDIC

SHAPES & SIZES



NORDIC
 7.91" x 3.97" x 2.36"
 200mm x 100mm x 60mm

COLOURS



MIDNIGHT CHARCOAL BLACKWOOD CHARCOAL GRANITE LAURENTIAN FAIRBANKS NIPISSING

Nordic is available in 80mm and 80mm Herringbone Pattern





VENETIAN - SPECIAL ORDER ONLY

SHAPES & SIZES



VENETIAN RANDOM

3 sizes of stone in each bundle.

7.1" x 4.8" x 2.36"

180mm x 120mm x 60mm

4.8" x 4.8" x 2.36"

120mm x 120mm x 60mm

2.4" x 4.8" x 2.36"

60mm x 120mm x 60mm

COLOURS



BLACKWOOD





BELGIUM

BUNDLES & SIZES (SOLD SEPARATELY)

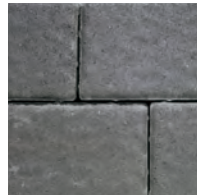


12" x 12" x 2.36"
300mm x 300mm x 60mm



6" x 9" x 2.36"
150mm x 225mm x 60mm

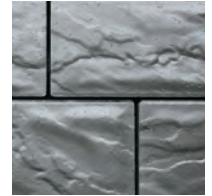
COLOURS



BLACKWOOD



NIPISSING



MIDNIGHT
CHARCOAL
(6x9 only)





SUPERIOR STEPPERS

SHAPES & SIZES

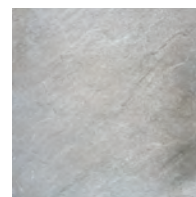


27" W x 21" D x 2" H
686mm x 533mm x 51mm
Eight different shapes are available per bundle



MADE STRONG WITH THE FINEST GRANITE AGGREGATE

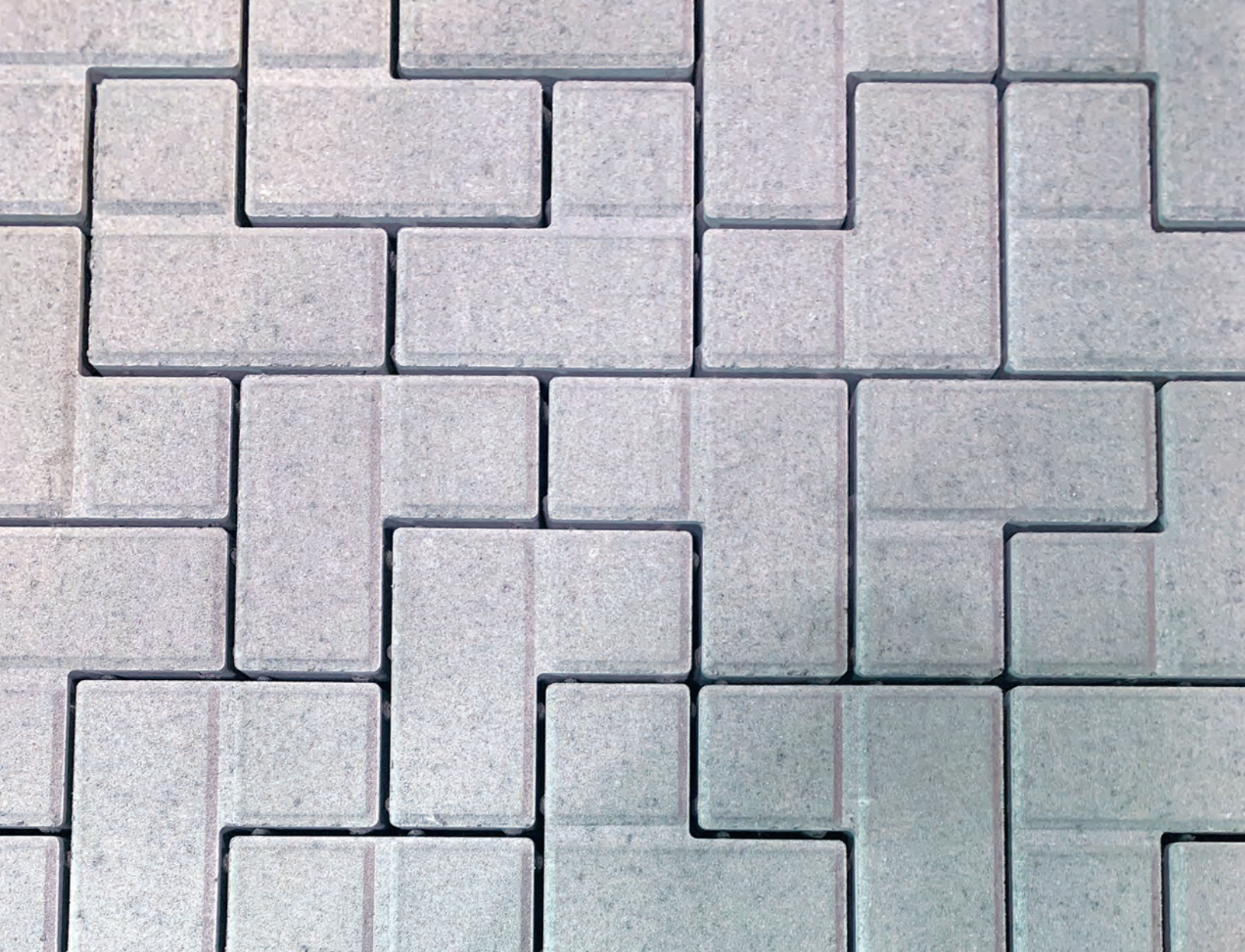
COLOURS



FOND DU LAC



MANITOU

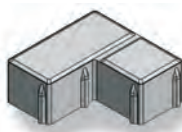


DC 80

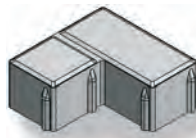
Permeable Interlocking Concrete Paver (PICP)
designed for maximum efficiency through mechanical
installation achieving a 6% void space for drainage

ALL COLOURS ARE
SPECIAL ORDER

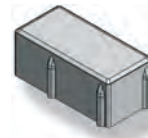
SHAPES & SIZES



BLOCK 1
7.6" x 7.6" (3.7" at
ends of "L") x 2.76"
193" x 193mm (93mm at ends
of "L") x 80mm



BLOCK 2
7.6" x 7.6" (3.7" at ends of
"L") x 2.76"
193mm x 193mm (93mm at
ends of "L") x 80mm



BLOCK 3
3.7" x 7.6" x 2.76"
93mm x 193mm x 80mm



BLOCK 4
3.7" x 3.7" x 2.76"
93mm x 93mm x 80mm





SHAPES & SIZES



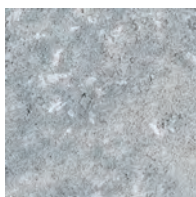
KENT II FIRE PIT KIT
 43.3" X 43.3" outside diameter x 12" H
 1100mm x 1100mm x 305mm
 Inside dimensions are
 27" X 27" approximately.



OXFORD FIRE PIT KIT
 46" outside diameter x 12" H
 1168mm x 305mm
 Inside dimensions are
 30" diameter approximately.

KENT II AND OXFORD FIRE PIT KITS

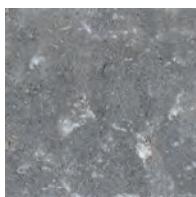
KENT COLOURS



GREY MIX

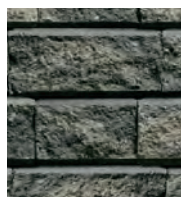


BEIGE MIX



ULTRA BLACK
 (Special Order)

OXFORD COLOURS



BLACKWOOD



NIPISSING

See Resource Guide for installation details.

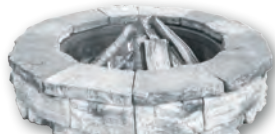


ROCKTON, BELVEDERE AND DIMENSIONAL FIRE PIT KITS

SHAPES & SIZES



ROCKTON KIT
 51" square x 12" H
 1295mm x 305mm
 Inside dimensions are
 28" x 28" approximately.



BELVEDERE® KIT
 58 " outside diameter x 14.5" H
 1473mm x 368mm
 Inside dimensions are
 37" diameter approximately.



DIMENSIONAL KIT
 44" square x 12" H
 1118mm x 305mm
 Inside dimensions are
 28" x 28" approximately.

COLOURS



FOND DU LAC
 Rockton



MANITOU
 Rockton
 Belvedere
 Dimensional



WINDSOR
 Belvedere
 Dimensional

See Resource Guide for installation details.





STONE EDGE CURBS

SHAPES & SIZES

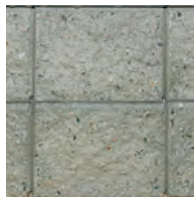


STONE EDGE CURB
6" H x 36" L x 7" W
152mm x 914mm x 178mm

COLOURS



EBONY



GRANITE



Image shown is Millstone Curb

CURBS

SHAPES & SIZES



DRIVEWAY CURB
6" W x 39" L x 6" H
150mm x 1000mm x 150mm



MILLSTONE CURB
4.72" H x 24" L x 3.94" W
125mm x 609.6mm x 100mm

COLOURS



CHARCOAL



GRANITE



Turn your vision into reality.

With so much to choose from, the possibilities are endless. Transform your ideas into something stunning with Brown's superior products. You'll impress your friends and neighbours and you'll be more than satisfied with the results.





TOP LEFT:
Driftwood Appian

BOTTOM LEFT:
Manitou Appian,
Mainitou Dimensional Steps

TOP RIGHT:
Manitou Belvedere
Firepit Kit

BOTTOM RIGHT:
Manitou Belvedere Wall



Dream with Brown's.

Start your project by browsing through the Brown's catalogue. We've put together some of the most diverse hardscape products you'll find anywhere. From lockstone to retaining walls to steps and fire pits, you're bound to create exactly what you have in mind. So go ahead... be creative!



TOP: Manitou Grand Ledge, Manitou Dimensional Steps
BOTTOM: Manitou Rockton



COLOUR CHARTS

DRY CAST COLOURS	SPECIAL ORDER										SPECIAL ORDER									
	AMBERLEY	APPIAN 50/70	APPIAN 50/70 SOLDIER	AZTEC 50/70 SOLDIER	AZTEC 50/70	APPIAN XL	ATHENIAN - SPECIAL ORDER	NORDIC	VENETIAN - SPECIAL ORDER	BELGIUM	DC 80 (PERMEABLE)	MILLSTONE CURB	DRIVEWAY CURB	PARKWALL	WEDGESTONE	ANTICO STACKER	GARDEN LOCK	OXFORD FIREPIT	KENT II FIREPIT	
BLACKWOOD																				
CHARCOAL										6X9 ONLY										
DRIFTWOOD																				
GRAY/GRANITE																				
LAURENTIAN																				
NIPISSING																				
TIMBERWOOD																				
FAIRBANKS																				
GREY MIX																				
BEIGE MIX																				
ULTRA BLACK																S.O.*			S.O.*	
MIDNIGHT CHARCOAL										6X9 ONLY										

*S.O.: SPECIAL ORDER

WET CAST COLOURS	SPECIAL ORDER										SPECIAL ORDER									
	ROCKTON	NORTHFACE	BELVEDERE WALL & COPING	DIMENSIONAL WALL	OUTCROPPING	GRAND LEDGE WALL	4' & 6' DIMENSIONAL STEPS	4' & 6' RANDOM STEPS	3' DIMENSIONAL STEPS	STEP FILLERS	SUPERIOR STEPPERS	ROCKTON FIREPIT	BELVEDERE FIREPIT	DIMENSIONAL FIREPIT	STONE EDGE CURB					
MANITOU																				
WINDSOR																				
FOND DU LAC							*L.Q.													
EBONY																				
GRANITE																				

*L.Q.: LIMITED QUANTITIES

All product measurements provided in this catalogue represent nominal dimensions. Product style, texture, and manufacturing process will dictate the tolerance that is considered normal and acceptable for that product style. Please refer to our website at www.brownsconcrete.com for standard and acceptable tolerances.



Brown's Concrete Products Limited

3075 Herold Drive, Sudbury, Ontario, Canada P3E 6K9

Telephone: 705-522-8220

Fax: 705-522-2732

Toll-free: 1-800-461-4888

Email: info@brownsconcrete.com

www.BrownsConcrete.com



FACEBOOK: @BrownsConcrete



TWITTER: @Browns1907



INSTAGRAM: @browns1907



LINKEDIN: @Brown's Concrete Products Limited



PINTEREST: @brownsconcreteproducts



YOUTUBE: Rosetta Hardscapes



CONCRETE
**MASONRY &
HARDSCAPES**
ASSOCIATION



BROWN'S LIFETIME WARRANTY

Brown's Concrete Products Limited provides a Lifetime Warranty to the original purchaser on the structural integrity of its products used in residential applications. If the material installed on the owner's property, using our recommended guidelines, proves to be defective the product will be replaced without cost. Colour matching and the occurrence of efflorescence cannot be guaranteed. The Warranty does not cover damage resulting from subgrade settlement or movement, contact with chemicals or paint, discolouration due to airborne contamination, staining, oxidation or improper sealing. Please refer to ICPI and/or NCMA for recommended product maintenance programs, winter care solutions and recommended de-icing products. This warranty is not transferable and proof of purchase is required.

Note: Colour swatches are for reference only and may not represent the actual product colour. We recommend that you see your local dealer to view actual sample pieces prior to final colour selection.